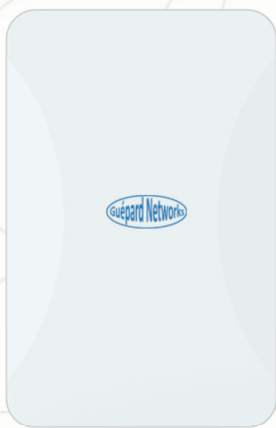


# OUTDOOR WIRELESS ROUTER & ACCESS POINT

## 3000Mbps

### Dual Band 2.4GHz/5GHz

### IEEE 802.11AX/AC/N/G/B/A



Professional Qualcomm Chipset  
Comply with the latest generation of 802.11ax Wi-Fi Technology

|             |      |        |            |                 |
|-------------|------|--------|------------|-----------------|
|             |      |        |            |                 |
| Hospitality | Home | Public | Generality | Industrial Park |

# Guépard 3000Mbps Outdoor

(Outdoor wireless Router/AP)

US & EUROPEAN TECHNOLOGY

## Guépard 3000Mbps Outdoor Dual Band wireless Router/Access Point

**Guépard 3000Mbps Outdoor** wireless Router/Access Points is specifically designed to operate in set-ups for both residential and commercial applications. Integrated Qualcomm chipset and high RF power to assure Wi-Fi coverage (wireless distance up to 300 meters) good choice in wide and airy terrain such as: Beach, stadium, school campus, golf course, airport, station, wharf. Comply with the next generation 802.11ax Wi-Fi standard (Wi-Fi 6): working on 2.4GHz **11ax** (600Mbps) and 5GHz **11ax** 2400Mbps simultaneously. Wireless speed up to **3000 Mbps** together with 2.5Gigabit Ethernet port not only enabling modern users whom enjoy high speed surfing but also allows for very stable connectivity of control systems and the possibility of bridging and providing access simultaneously.

The very stable operating devices minimize the occurrence of auto resets and prevent faulty start-ups after resetting. The flexible with simple web interface (friendly GUI) which saving time configuration process for the installer.

### 2.4G & 5G dual band concurrent

Provide 2.4G & 5G wireless signals in two different frequency bands dual band concurrent rate up to 3000Mbps; Using Wave2 MU-MIMO wireless technology, it can simultaneously connect 150 wireless terminal devices and increase the average bandwidth of each terminal by 3 to 4 times; Light speed transmission, don't miss every detail; stable performance, stable win ticket.

|   |             |                 |
|---|-------------|-----------------|
|  | <b>2.4G</b> | <b>600Mbps</b>  |
|  | <b>5G</b>   | <b>2400Mbps</b> |

# 3000 Mbps



### Working ability in harsh environments

**Guépard 3000Mbps Outdoor** protected by ABS material shell which avoid the damage from dust, rain, high humidity and direct sunlight. So **Guépard 3000Mbps Outdoor** adapt to various environments where temperature normal can be -20°C to 70°C. It's suitable for harsh environments.

### Professional Outdoor Shell+Internal Lightning Protection Design, Suit for multiple Harsh Environment

Adopt outdoor ABS plastic shell and Professional lightning protection components, provide IP67 water-proof, dust-proof, suit for multiple harsh environment. Even in extreme hot and cold environment (-20°C-70°C), also can work stable.



### High performance

**WiFi 6**

WiFi6 Standard Qualcomm chipset,  
Excellent performance guarantee  
powered by **QUALCOMM**

**Users per AP up to 200 users**

With strong and high-class hardware, the **Guépard 3000Mbps Outdoor** can be serving 200 active users connectivity at the same time.

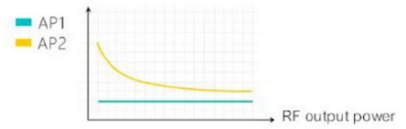
## Adjustable RF power



Before adjusting the wireless transmission power

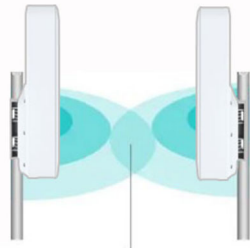


After reducing the wireless transmission power

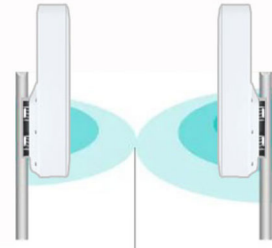


### RF power can be adjusted according to the actual use environment

Reduce mutual interference between APs and improve wireless stability



Outdoor AP signal coverage overlap area  
Interference exists, AP signal quality is poor



There is no mutual interference between neighboring APs.  
AP signal is significantly enhanced

## Wide area signal coverage

### Wide area signal coverage

Smoothly transfer all kinds of data, goodbye losing signal.

Guépard 3000Mbps high-power base station AP can cover a wide area of 300 meters, Can easily meet the large-scale coverage needs of outdoor WiFi projects, Special optimization of high-power signals through wireless technology, Ensure that the signal is strong enough and the signal is more stable.

cover radius of about 300 meters

Wide area signal coverage which will save cost and increasing users experience

### Power over Ethernet

The **Guépard 3000Mbps Outdoor** can be powered fully with PoE (Power over Ethernet) minimizing power cable's needs throughout the building or structures.

The **Guépard 3000Mbps Outdoor** can be ability configured in up to 8 separate SSID's (each SSID support tag VLAN) allow simulating different wireless networks like a guest network. These networks can be configured to give different users, different rights that are specific each user and their individual needs (e.g. access the network or dedicated parts of the network, access internet or just intranet, use VoIP, stream video, gaming etc.).

The **Guépard 3000Mbps Outdoor** offers multiple security modes, which makes safe data transmission. The Unified Management System (AP Controller) based on X86 base allows network administrators to centrally manage IP Address, SSID, Security Settings, firmware upgrading etc. for all the LAN APs. What's more, this wireless access point work with Management System, easy to do remote management, advertisement and captive portal authentication, which make this AP more professional in Wi-Fi Projects.

### Applications

This high power, dual band radio and high speed wireless access point can be deployed in a wide array of situations for both residential and commercial applications.

## Multiple Application Scope

Dual band high speed  
fit for many environments which request for multiple users access,  
like airport/ pier/ school/ station/ meeting hall/ golf course/ resort.



### 802.11ax advantages

802.11ax (Wi-Fi 6) have more advantages than before (Wi-Fi 5). Which will bring users increasing good experience with better security as: Increase WiFi speed, stable network, increase efficiency due to OFDMA, MU-MIMO, enhance security with WPA3 encryption standard.

|  |   |
|--|---|
| <b>Wireless throughput</b>   | <b>3000Mbps</b>   |
| Model  | GC1200ac  |
| Type   | Outdoor   |
| <b>Category</b>  | <b>Professional</b>   |
| Client capacity<br>(simultaneous access)   | 100 clients ( <i>Recommended</i> )<br>Max 200 clients ( <i>Lowest sharing bandwidth</i> ) |
| Chipset (SoC)  | <b>Qualcomm</b>   |
| <b>Interfaces</b>  |   |
| WAN  | 1 x 2.5GbE copper<br>(Support IEEE 802.3at PoE)   |
| LAN  | -   |
| LED light  | WAN   |
| <b>Wireless</b>  |   |
| Wireless technology supports   | <b>WiFi 6</b>   |
| Data Rate  | <b>3000Mbps</b>   |
| Frequency<br>(The supported frequency band is restricted by local regulations. Accordant with technical standard of U.S (FCC), Europe (ETSI), Japan, Korea and China (in covering 2.4 GHz, 5 GHz ).) | 2.4GHz + 5GHz   |
| Channel Bandwidth  | 20Mhz/40Mhz/80Mhz/160Mhz  |
| Modulation   | OFDM = BPSK,QPSK, 16-QAM, 64-QAM, 256-QAM   |
| Antenna  | Build in 6dBi Dual band directional antenna<br>(MU-MIMO technology)                       |
| Emitted distance in LOS (meter)  | Up to <b>300m</b><br>160m ( <i>Recommended</i> )  |
| <b>Function</b>  |   |
| Operation Mode   | Router/AP   |
| Protocol   | IEEE 802.11b/g/n/ax (2.4G WLAN)<br>IEEE 802.11 a/n/ac/ax (5G WLAN)                        |
| SSID<br>(Support Multi-SSID)   | -<br>8  |
| VLAN<br>(support tag VLAN and VLAN management)   | IEEE 802.1Q   |
| Security   | WPA/WPA2/WPA3   |
| System Settings  | Web-based configuration   |

|  |   |
|--|---|
| Configuration Backup   | Restore device's settings & configuration to local file |
| Centralized management   | Centralized management ability over AP Controller       |
| <b>Environment</b>   |   |
| DC Power   | DC:12V-2A   |
| <b>PoE Adapter (included)</b>  | <b>48V/802.3at/GbE</b>                                  |
| Power Consumption  | ~24W  |
| Cover material   | ABS plastic   |
| ESD and surge protection   | Yes   |
| Water-proof Level  | IP67  |
| Operating Temperature  | -20°C~70°C  |
| Humidity   | 5%-95% non-condensing                                   |
| <b>Dimensions</b>  |   |
| Shape  | Rectangle   |
| Height x Width x Depth (mm)  | 295 (H) x 180 (W) x 80 (D)                              |
| Diameter x Depth (mm)  |   |
| Height x Width x Depth (inches)  | 11.61 (H) x 7.1 (W) x 3.2 (D)                           |
| Diameter x Depth (inches)  |   |
| Form Factor  | Post Mounted  |
| Weight (kg)  | 1.2   |
| Weight (lb)  | 2.7   |
| <b>Technology &amp; Quality</b>  |   |
| US & European technology (100% products checked 02 times before shipment)                                  | 24 months warranty                                      |
| <b>Package</b>   |   |
| AP complete set/LAN Cable/ PoE 2.5Gbps Adapter (IEEE 802.3at, 48V/0.6A; AC 100V/240V)/ Setting accessories |   |
| <b>Regulatory Compliance</b>   |   |
| FCC, CE, Rohs  |   |

\* **HARDWARE:** With power hardware (Qualcomm chipsets and high memory) - **Guépard 3000Mbps Outdoor** have simultaneous ability accesses up to 200 users surf internet (reading news, access website, FB, X, Google...) or 80 video streaming, Netflix ... end users.

\*\* **RF MANAGEMENT:** **Guépard 3000Mbps Outdoor** can be flexible for decreasing or increasing WLAN coverage (Ex: can be adjusted WLAN coverage from 100 meters to 300 meters and quantities of walls to penetrate). **Guépard 3000Mbps Outdoor** can be flexible to extend more Wi-Fi zone with AP Controller.

**Recommended: user should usual keep away from running AP at least 1-2 meters.**